

SIMAGIC

GT4 CARBON BRAZING STEERING WHEEL USER MANUAL (VERSION V1.1)

1. About SIMAGIC	3
2. Product Introduction	
2.1 Overview	4-5
2.2 Semi Clutch Setting	6
2.3 Basic Parameter	7
2.4 Technical Introduction	8
3. Basic Settings	
3.1 Steering Wheel Calibration	9
3.2 Semi Clutch Setting	10
3.3 Light Regulation	11
4. Safety Suggestion	12
5. Packing Brief	13
6. Quick Release	14
7. Upgrade Guide	15-17
8. Warranty Description	18
9. Disclaimer and Notice	19

GT4 Carbon Brazing

Welcome to the Direct Drive Revolution.





Founded in July 2018 in Shenzhen, a young city of dreams, SIMAGIC Tech Co., Ltd has become a leading force nationwide in the sim-racing field, who provides high-end simulation devices to customers and overall solutions to the industry.

"Full dedication to promoting sim-racing culture" is SIMAGIC's cardinal principle and spirit. "Leading the trend of Sim-racing technology and innovation" is the goal of our branding. With that belief in mind, we devote ourselves to filling the vacancy in China's sim-racing industry. Our innovation and optimization of products never stop. WE are in the vanguard of sim-racing technology. It's our mission to build smart and advanced sim-racing equipment for car-racing game lovers, reproduce authentic racing experiences for players, and provide a brand new sim-driving application for the driving industry.

Jinquan Li, founder and CEO of SIMAGIC, graduated from Shenzhen University with a master's degree in Control Theory and Engineering. His commitment lies deep in the study of control system and driving mechanism. With his team, plus equipped with passion and professionalism, they have been through a 3-year journey of sweat and effort preparing for the best. After the rollout of its first commercial Direct Driving Wheelbase in August 2018, SIMAGIC made its name nationwide. Three years were rather short but long enough for SIMAGIC's innovation to go forward. M10 Base, GT Wheel Series, α Servo Base, Pedals, Sequential Shifter, and more, the SIMAGIC family is booming. Now, we have become the only sim-racing company that integrates R&D, production, and marketing, and revolutionized driving simulation systems with overall upgrades in customization and development.

In the future, SIMAGIC's spirit of "be guided by technology, be led by intelligence" will go even further. We'll actively pursue product development through science and technology, explore the infinity of the best user experience, and develop a new sim-racing culture based on "China's intelligent manufacturing."

2.1 Overview

- * 300mm grip to grip wheel length
- * The main body is made of high-strength aluminum CNC machining and the beautiful design of a race car brings a strong desire for conquest;
- * The grip is wrapped with environmentally-friendly silicone, with a brand-new comfortable skin-friendly feel;
- * Through the overall sandblasting oxidation process, the steering wheel has a high-profile elegant black and fine matte texture;
- * SIMAGIC independently designed magnetic optical induction shift paddles;
- * The laser-engraved SIMAGIC track element LOGO decorative panel gives the disc body a stronger sense of racing element;
- * Standard carbon fiber board gives users space for custom car logo.

GT4-CV1

SINGLE PICK



GT4-C-CV1

DOUBLE CLUTCH



Direct drive simulator GT4 steering wheel independently designed magnetic optical shift paddle,It has a very high real car simulation feel.

Single Pick



Positive Plane



Back Facing

Double Clutch



Positive Plane



Back Facing

2.3 Specifications



Width : 300mm

Height : 165mm

Weight : 2.2KG

2.4 Technical Introduction



New integrated design, the panel integrates a variety of buttons and lever operation area, which can be integrated and set quickly. 8 integrated buttons with RGB lighting; 2 four-way switches with encoder; 2 buttons with encoder.



50mm True Quick Release steering wheel without requiring any tools. Fast yet secure using automotive grade QR system.



Both the paddle and clutch use non-contact sensors without contact damage.



Instant real time mapping. The optical sensing module can quickly and accurately map the paddle shifting parameters of each moment to the control software parameter page while driving.



Equipped with self-developed control software, Race Manager has feature rich yet simple and user friendly functions that adjust data according to different personal needs.



Comfortable leather package grip, palm force grip size, experience more enjoyable driving experience.



The program can be updated online and more functions of hub can be developed continuously.

3.1 Steering Wheel Calibration

- ① Turn the mode switch to the **Settings mode**



- ② Push the left multi-directional switch upwards (without releasing it). While holding up the switch, pull TWICE on each of the four paddles ABCD in any order, one at a time.
- ③ After completing the above operations, turn the mode switch to **C position mode** to save the calibration.
- ④ Calibration is completed.

Note:

- * This step may be required for first time use of the Hub or if hub channel has been changed in Race Manager.
- * The steering wheel must be connected to powered on wheelbase during calibration. * If the paddle buttons on the control program calibration page jump or become invalid after calibration, perform calibration again

3.2 Semi-Clutch Setting

- ① Turn the mode switch to the **Settings mode**



- ② Pull and hold the desired clutch paddle (during the entire settings process)
- ③ While pushing in Knob 2 and then turning left or right to adjust accordingly. With the steering wheel mounted on the base, the size of adjustment can be viewed on the second page of the race manager.
- ④ After adjusting, release the clutch and switch the back to C position mode to save the settings

Note:

* This setting is only valid for the dual-clutch version(four paddle) steering wheel;

3.3 Light Regulation



- ① Turn the mode switch on the back of the steering wheel to the **Setting mode**.
- ② Press any of the 8 buttons individually to change to desired color. There are 8 different colors that can be cycled with each button press.
- ③ After completing the above operations, turn the back switch to **C mode** to save the changes.

Swipe to watch detailed adjustments and upgrade the video



Steering wheel adjustment, upgrade video address:
<https://www.bilibili.com/video/BV1Zh411Y7oh/>

Safe Operation

- * **Power-on instruction: before turning on the power, make sure that the power cord is connected to the wheelbase. Only unplug the power cord when the wheelbase is switched off.**
- * It is strictly forbidden to expose the device and its power supply to rain or humidity in order to avoid short circuit and electric shock that may cause device malfunction and fire.
- * Desired temperature of operation is 15°C-35°C.
- * The recommended operation time of the wheel with continuous force feedback activity is 1 hour. Excessive use may cause health risks. We suggest taking a 5-minute break every 20 minutes. Do not drive for more than 2 hours a day.
- * Although this product has force feedback configuration, children under 13 years old must be under parental supervision to complete the configuration. Parental guidance is required to monitor children's use of the device.
- * This product contains small pieces and is not suitable for children under 13 years old to use alone.
- * When you use it for the first time, please adjust the force feedback from minimum to a level you are accustomed to.
- * In the game, if the Force Feedback previously set is beyond your control, please stop the game immediately and adjust the force feedback parameters.
- * The wheelbase contains components that cannot be repaired by the user. Opening the casing is forbidden and may cause harm to people or property.
- * Do not open the casing of the device, as it will void the warranty.

Electrical Safety

- * Use only the power supply and power cord that came with your wheelbase, which is important to protect your safety, rights, and interests.
- * Do not use a non-standard power supply and power cord.
- * To ensure safety, replacements may only be issued from an authorized repair center.
- * Do not use non-standard power sources, even if the voltage and frequency appear acceptable.
- * To avoid product damage, use only AC power with a standard wall socket.
- * Do not expose your wheelbase to sources of heat.
- * Unplug the power cord of your wheelbase when unused for long periods of time.
- * If the wheelbase is found to have any malfunctions, stop using it immediately and contact SIMAGIC Official or authorized center for help.
- * Please subscribe to SIMAGIC official website and social platforms for any update regarding product information.

 *** This product is only limited to simulation driving related activities. Please distinguish simulation games from reality and drive safely!**

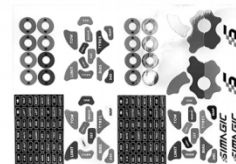
5.1 Package Brief



1.5m USB data cable
Delivered to users with
package for hub upgrade
or standby



Warranty card
As an important evidence
of after-sales service,
please keep it properly



SIMAGIC Stickers for DIY



① Retract the red shell of the quick release toward the steering wheel (retract the shell when removing the quick release)

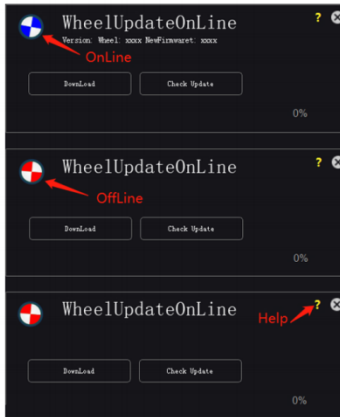


② After aligning the holes of the base, insert the steering wheel into the base



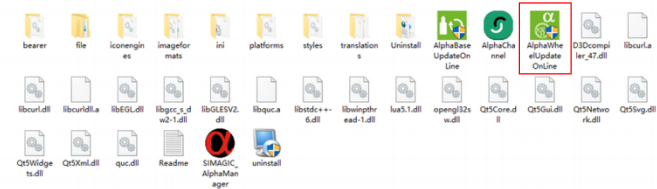
③ If the quick release cannot be locked, it may be because the holes are not aligned. Rotate the steering wheel or remove it and insert it again.

Note: SIMAGIC's customized quick release adopts a high-precision design with six beads on the top and four beads on the bottom. The steel ball holes must be aligned with the base to access the base.



- Steering wheel upgrade, please protect Keep computer networking status.

- Go to the Race Manager folder, Open the base upgrade program and prepare to upgrade



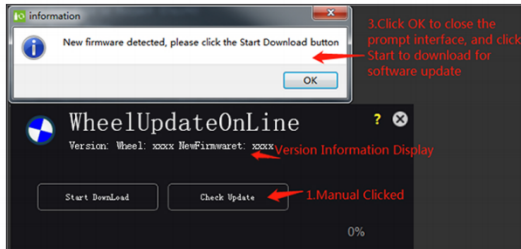
- Check the version status. Simagic products will always be up to date When you get them. If it's a new version Please pay attention to the official channel.

Note:

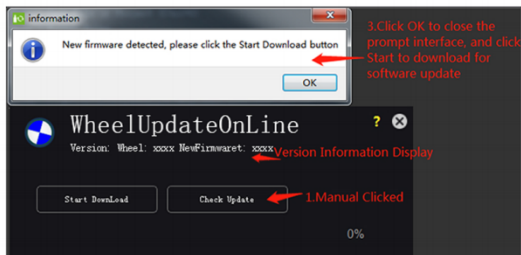
Do not do any operation during the upgrade. After the upgrade is successful Restart the base to complete the version upgrade, and it can be used normally.

Update (step 1) :

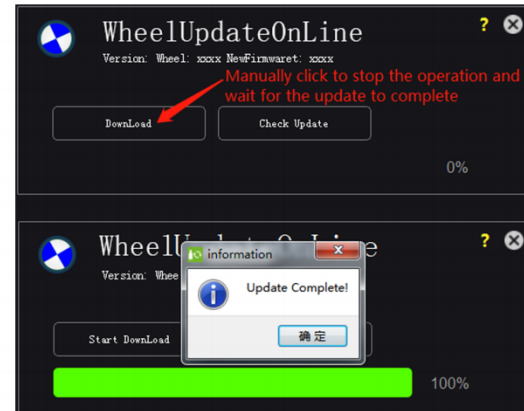
- (1) USB cable to connect
- (2) Wheel on the electricity
- (3) Wait for the self-test to complete
- (4) Open the WheelUpdateOnLine software
- (5) Power on self-detection



(6) Manual testing

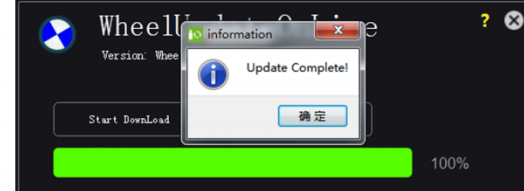


(7) Download operation



(8) Exit the software

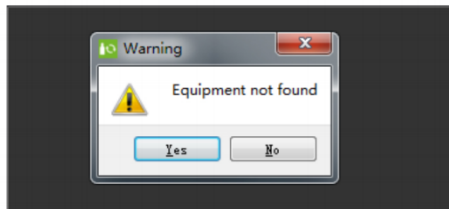
(9) Restart the Wheel



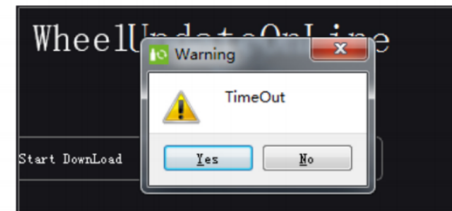
Prompt processing :

- (1) Exit the software
- (2) Restart the Wheel
- (3) Go back to step 1

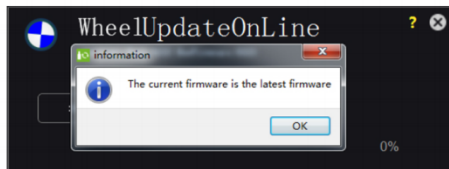
01- *quipment not found:*



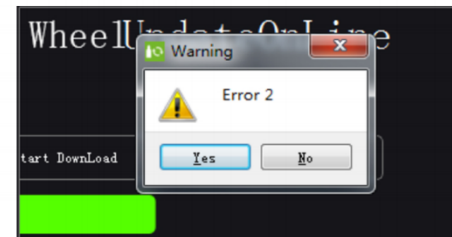
03-*The current firmware is the latest firmware:*



02-*Time Out:*



04-*Error 1-Error 5:*



A One-year Limited Warranty is offered on SIMAGIC products. SIMAGIC guarantees that this Product is free of defects in materials or workmanship under normal use during the Limited Warranty Period.

This Limited Warranty Period commences from the date of purchase. The buyer must retain the warranty card and receipt, which will be required by your Purchase Site or SIMAGIC Authorized Distributors, as a condition of receiving warranty service. The buyer is guaranteed a warranty repair service within the Limited Warranty Period.

During the Limited Warranty Period, SIMAGIC will, at its sole discretion, repair or replace any defective parts or components of the Product.

Obtaining Warranty Support

SIMAGIC products are sold through a distribution network. The network is built upon careful selection of reliable distributors to provide valuable services to the customer, including providing after-sales service for hardware issues, helping optimize gaming experiences, and connecting with SIMAGIC HQ.

1. To request a Warranty service, please contact the Authorized Distributor you purchased from.
2. When purchasing from a second-hand dealer, make sure to obtain the warranty card and receipt from the dealer.

Any product that is NOT originally sold by a SIMAGIC Authorized Distributor will automatically be excluded from the Limited Warranty Service.

Many unauthorized resellers do not fully disclose the risks associated with buying from them.

Please be cautious when making your purchase.

Check the Official Distributor list for reference: <https://www.simagic.com/#/PageMainEn/PageShoppingEn>

For more information on after-sale or warranty service, please check out our Terms and Conditions at SIMAGIC.COM or contact us @simagicofficial via social media platforms like instagram and Facebook.

- * This product has strong force feedback strength and contains small parts. Children are forbidden to use the device without parental guidance.
 - * Please turn off the button and power supply to prevent accidents.
 - * Anyone trying to use your device for the first time must be instructed and monitored by you the owner.
 - * Loose clothing and easily tangled objects such as hair, cables, and skirts should be kept away from the device.
 - * Your SIMAGIC DDW is ready to use after being unboxed. We make sure the firmware is updated to the latest version when it leaves the factory. For more information regarding software update, please refer to the SIMAGIC website and follow us on Twitter, Facebook, and Instagram @Simagicofficial.
 - * Users MUST wait for 1 hour before driving a car if they had been using the device.
 - * This instruction manual is for demonstration purposes only, not for marketing purposes. It is a general instruction of a single product (including the relevant series products). Please refer to the actual item for your purchase.
 - * The product images and contents shown above are for demonstration purposes only. The actual products may vary slightly in terms of the external design (including but not limited to appearance, colors, and sizes) and the content display (including but not limited to backgrounds, UIs, and pictures). Please check the actual products for reference.
 - * The test data above are all sampled from the SIMAGIC test laboratory and may not reflect the actual performance due to conditions of use and environmental factors. Please refer to the actual user experience for performance evaluation.
 - * The above contents, such as descriptions and images, are subject to changes. SIMAGIC may adjust relevant contents to provide more accurate product information, specification, and feature description at any time based on the actual products in terms of performance, specification, index, and other information. Sometimes, the product supply may fluctuate due to unforeseen problems happening in the process of batching or delivery. In that case, SIMAGIC may change relevant descriptions and images as needed without notification. Please refer to official channels for the latest information.
- * **Note: Documents like product manuals are written based on SIMAGIC products as supplements. Please download the relevant documents at approved channels for the security of users' legitimate interest.**



Official website: www.simagic.com
International media platform: SIMAGIC official

This manual is updated without notice.

The latest manual and any SIMAGIC related information can be found on the official website .
If you have any questions and/or suggestions about this instruction manual or SIMAGIC products,
please contact us through the information channel.