

## CALIBRATING YOUR PADDLE SHIFTERS - GT1-R / GT1-D Wheel

**STEP 1:** Attach the GT1 wheel to your base and power ON the base unit.

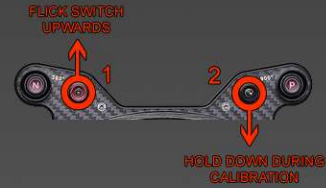


M10



Alpha / Mini

**STEP 2:** Flick the Left Toggle switch upwards, then press and HOLD the Right Toggle Switch downwards (Do NOT release until calibration is complete).



**STEP 3:** While holding the Right Toggle switch downward, Press each paddle Individually, in any order, 2x.  
(2 Paddles = A-B, A-B or 4 Paddles = A-B-C-D, A-B-C-D)



**STEP 4:** Release the Right Toggle switch. Next, Flick the Left Toggle switch back to the Center position to save your settings.



(IF YOU EXPERIENCE ISSUES WITH MISS-SHIFTS OR SHIFTERS NOT WORKING, REPEAT STEPS 1-4)

## CALIBRATING YOUR PADDLE SHIFTERS - GT4 Wheel

**STEP 1:** Attach the GT4 wheel to your base and power ON the base unit.



M10



Alpha / Mini

**STEP 2:** Slide the switch on the back of your wheel all the way towards the Quick Release.



**STEP 3:** First, press and HOLD the Left Multi-Directional switch Upwards. Next, while holding the Left Directional switch, press each Paddle Individually, in any order, 2x.  
(ie. A-B-C-D, A-B-C-D)



**STEP 4:** Once STEP 3 is complete, slide the Switch on the back of your wheel ALL the way towards the Paddle Shifter to Complete the Calibration.



2

(IF YOU EXPERIENCE ISSUES WITH MISS-SHIFTS OR SHIFTERS NOT WORKING, REPEAT STEPS 1-4)

# HOW-TO: Adjusting Clutch Bite Point

4

## ADJUSTING YOUR CLUTCH PADDLES - GT1-R / GT1-D Wheel (\*4-Paddle Version Only\*)

**STEP 1:** Power ON your Base with the GT1 Wheel Attached. Launch Race Manager (M10) or Alpha Manager (Alpha / Mini) and click on the Calibration page. We will be using the "RY" meter to help make adjustments.



**STEP 2:** Flick the Left Toggle switch upwards. PULL and HOLD the Clutch Paddle you would like to adjust to its maximum extent. (ONLY Pull 1 Clutch Paddle - A or B)



**STEP 3:** While holding the desired Clutch Paddle, Push IN then TURN, the Right Rotary Knob, LEFT or RIGHT to adjust the bite point. You can view the changes via the "RY" meter within Alpha / Race Manager.



**STEP 4:** Release the Right Rotary Knob. Release the Clutch Paddle. Then Flick the Left Toggle Switch Back to the Center Position to Save your settings.



(Repeat Steps 1-4 If You Would Like To Re-Adjust Your GT1 Clutch Paddles)

## ADJUSTING YOUR CLUTCH PADDLES - GT4 Wheel (\*4-Paddle Version Only\*)

**STEP 1:** Power ON your Base with the GT4 Wheel Attached. Launch Race Manager (M10) or Alpha Manager (Alpha / Mini) and click on the Calibration page. We will be using the "RY" meter to help make adjustments.



**STEP 2:** Slide the switch, on the back of the wheel, ALL the way towards the Quick Release. PULL and HOLD the Clutch Paddle you would like to adjust to its maximum extent. (ONLY Pull 1 Clutch Paddle - A or B)



**STEP 3:** While holding the desired Clutch Paddle, Push IN then TURN, the Right Rotary Knob, LEFT or RIGHT to adjust the bite point. You can view the changes via the "RY" meter within Alpha / Race Manager.



**STEP 4:** Release the Right Rotary Knob. Release the Clutch Paddle. Then slide the switch, on the back of the wheel, ALL the way towards the Paddle Shifter to save your settings.



(Repeat Steps 1-4 If You Would Like To Re-Adjust Your GT4 Clutch Paddles)

## CHANGING BUTTON LED's - GT1-R / GT1-D Wheel

**STEP 1:** Attach the GT1 wheel to your base and power ON the base unit.



M10



Alpha / Mini

**STEP 2:** Flick the Left Toggle Switch upwards, then press the Right Toggle Switch upwards, repeatedly, to cycle through the different options.

(Options - ON / Fast Flashing / Slow Flashing / OFF)



**STEP 3:** Once you achieve the desired effect, Flick the Left Toggle Switch back to the Center Position to save your setting.



(Repeat Steps 1-3 whenever you want to change LED Effects on your GT1 Wheel)

## CHANGING BUTTON LED's - GT4 Wheel

**STEP 1:** Attach the GT4 wheel to your base and power ON the base unit.



M10



Alpha / Mini

**STEP 2:** Slide the Switch on the back of your wheel ALL the way towards the Quick Release.



**STEP 3:** Press EACH push button (Circled in RED), One at a time Repeatedly, to cycle through the different Colors.

(7 Color Options Available + LED's OFF)



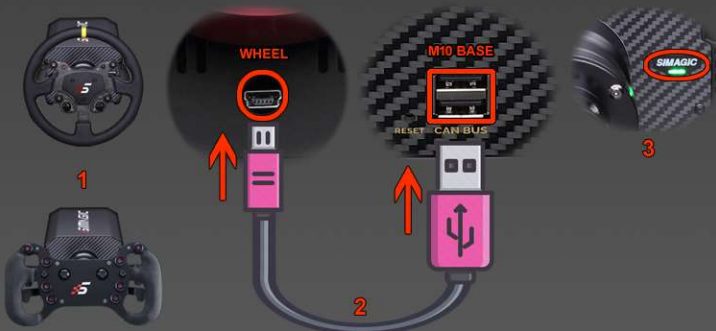
**STEP 4:** Once you have set each button to the desired color, Slide the switch on the back of the wheel ALL the way towards the Paddle Shifter. This will save and complete the configuration.



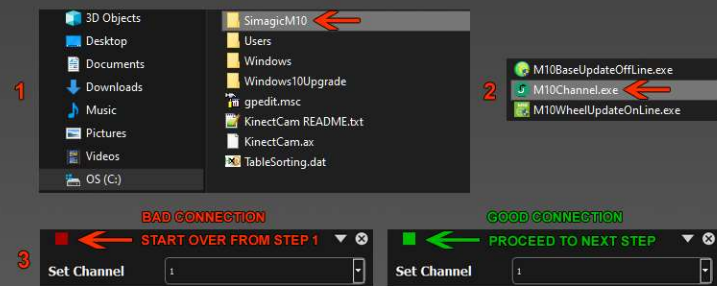
(Repeat Steps 1-4 whenever you want to change LED Colors on your GT4 Wheel)

## M10 BASE - GT1 and GT4 Wheels

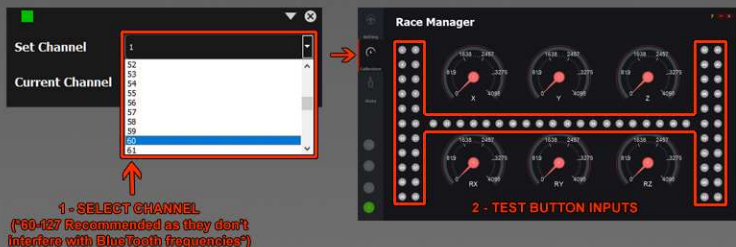
**STEP 1:** Attach your Wheel (GT1 or GT4) to the M10 Base. Connect a USB cable to the port on the Back of your Wheel. Connect the other end of the USB cable to the Can-Bus port on the Back of your Base. Power ON your M10 Base.



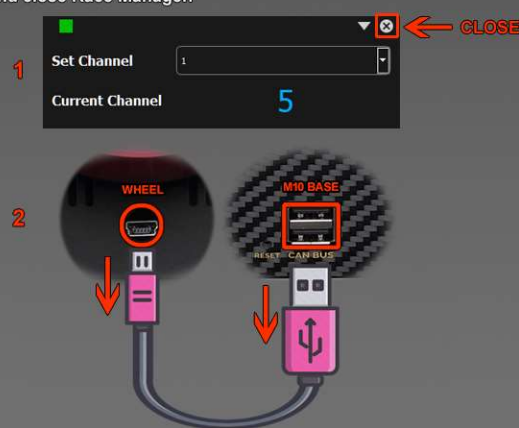
**STEP 2:** Open the Race Manager Installation folder (C:\SimagicM10). Locate and Launch the M10Channel.exe file. If a **RED** square is shown in the Top Left Corner, start over from Step 1. If a **GREEN** square is shown in the Top Left Corner, proceed to the next step.



**STEP 3:** Open Race Manager and click on the Calibration page. We will use this page to test button inputs after changing channels. Go back to the M10Channel.exe and Click on the Dropdown List. Select a Channel then press the buttons on your wheel to see if they register in the Race Manager Calibration page. If NO input is registered, select another channel until your button inputs are recognized in Race Manager. (\* Recommended Channels 60-127 \*)



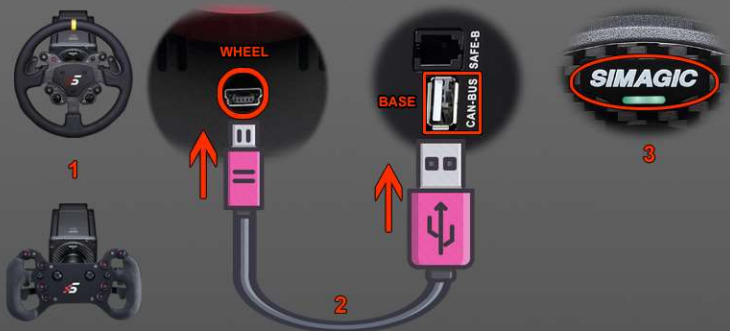
**STEP 4:** Once you have found a Channel that works, Close the M10Channel.exe app, then Disconnect the USB cable from your Base and Wheel. Power OFF your base and close Race Manager.



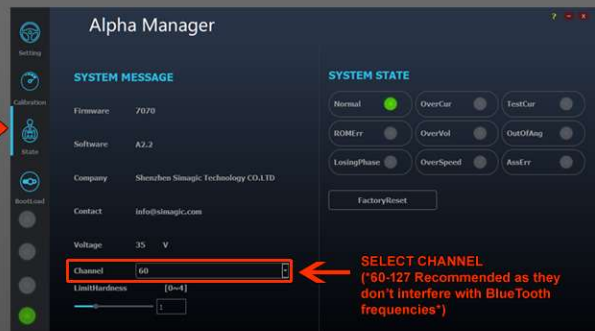
\* REPEAT STEPS 1-4 FOR EVERY WHEEL YOU OWN. MAKE SURE ALL YOUR WHEELS AND BASE ARE ON THE SAME CHANNEL FREQUENCY \*

## ALPHA / MINI BASE - GT1 and GT4 Wheels

**STEP 1:** Attach your Wheel (GT1 or GT4) to the Alpha / Mini Base. Connect a USB cable to the port on the Back of your Wheel. Connect the other end of the USB cable to the Can-Bus port on the Right Side of your Base. Power ON your Base unit.

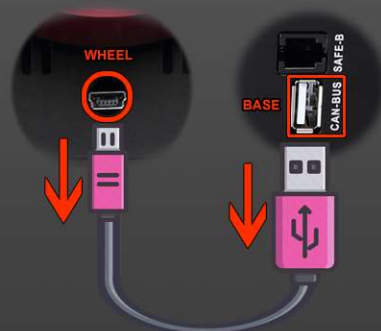
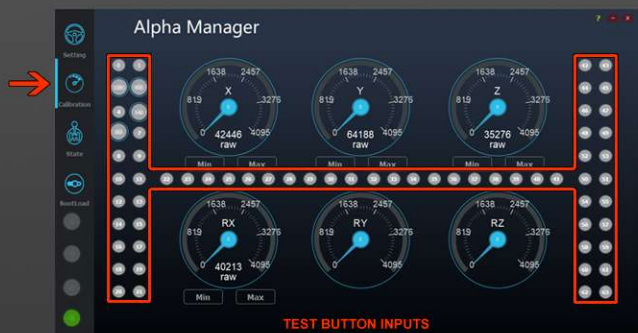


**STEP 2:** Launch Alpha Manager and navigate to the "State" page. Click on the Dropdown list next to the "Channel" parameter and select a channel. (\* Recommended 60-127 \*)



**STEP 3:** Navigate to the "Calibration" page within Alpha Manager and Press the buttons on your wheel. If NO input is recognized, change to another channel and re-test. If your inputs are recognized, move to step 4.

**STEP 4:** Once you have found a channel that works, Disconnect the USB cable from both your base and wheel. Power OFF your base and Close Alpha Manager.



\* REPEAT STEPS 1-4 FOR EVERY WHEEL YOU OWN. MAKE SURE ALL YOUR WHEELS AND BASE ARE ON THE SAME CHANNEL FREQUENCY \*